

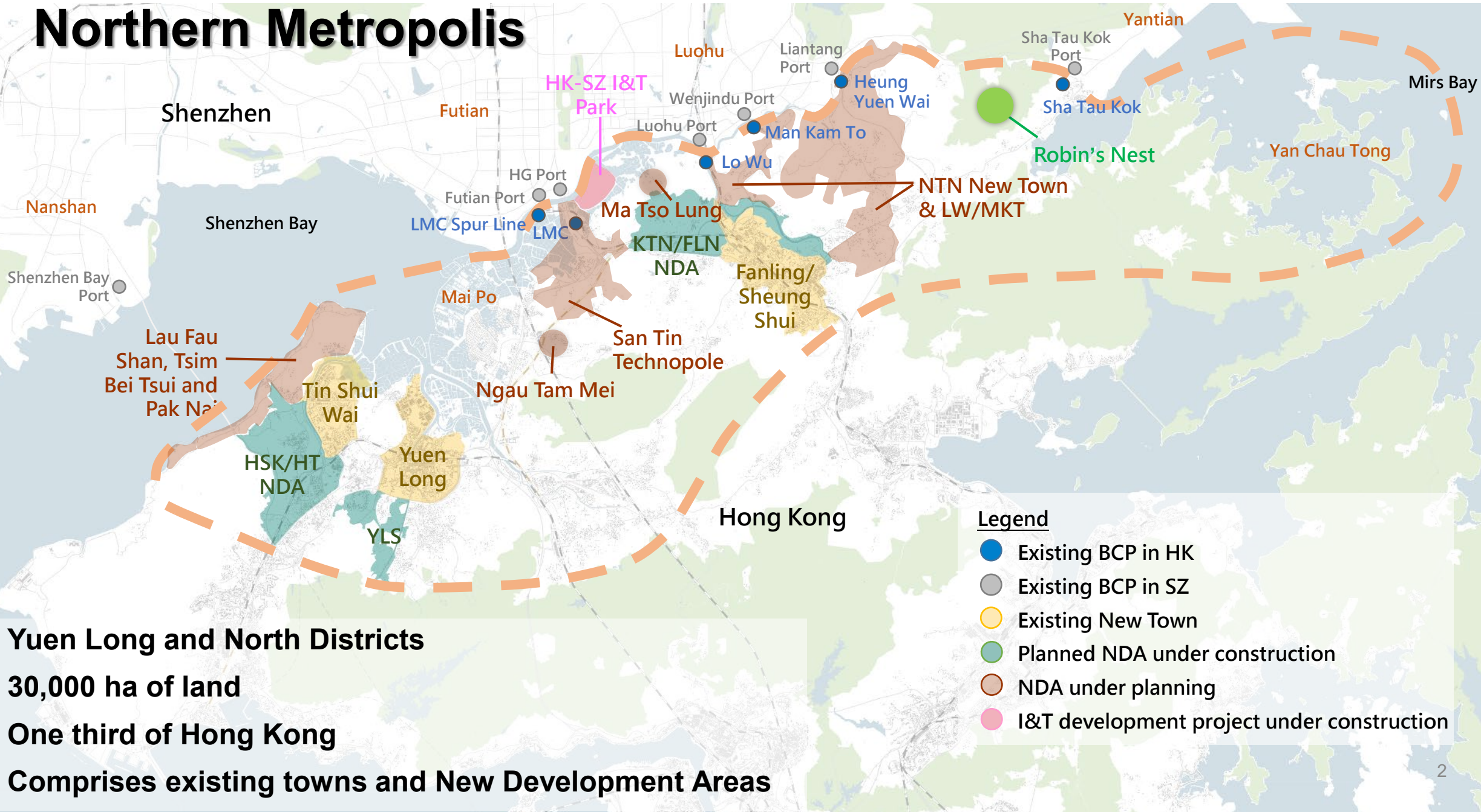
# Northern Metropolis Action Agenda



Northern Metropolis Co-ordination Office  
Development Bureau  
The Government of the Hong Kong Special Administrative Region  
of the People's Republic of China



# Northern Metropolis



- **Yuen Long and North Districts**
- **30,000 ha of land**
- **One third of Hong Kong**
- **Comprises existing towns and New Development Areas**

**Legend**

- Existing BCP in HK
- Existing BCP in SZ
- Existing New Town
- Planned NDA under construction
- NDA under planning
- I&T development project under construction

# Northern Metropolis Action Agenda

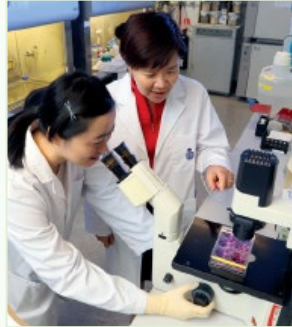
- 2023 Policy Address: NM is to adopt an “**industry-driven and infrastructure-led**” approach as its key planning axle, which will forge a major hub for HK to integrate into the overall development of our country
- **Action Agenda** outlines the **development blueprint** of the Northern Metropolis in detail, including the development positioning of the four major zones, major developments, conservation projects, development programme, etc., and contains a specific chapter on how the Government plans and provides land based on the needs of different industries, in line with the “**industry-driven**” **development approach**



# Northern Metropolis: Vision and Target



Providing land and housing



Industry-driven planning & better home-job balance

Promoting integration of Greater Bay Area



Infrastructure-led, railways as backbone



Developing "NM University Town"



Ecological conservation, urban-rural integration

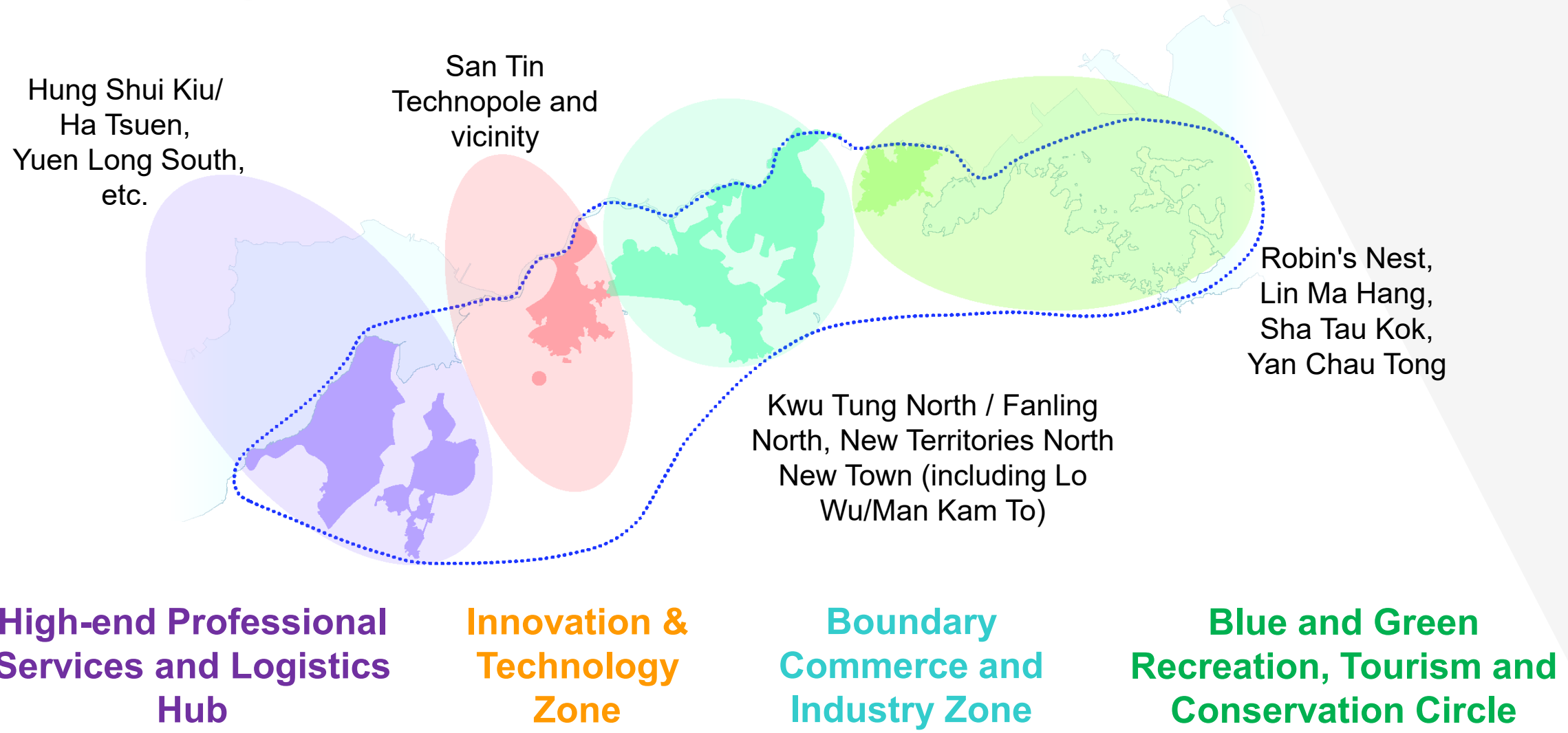


Developing diversified arts, culture, sports & youth facilities



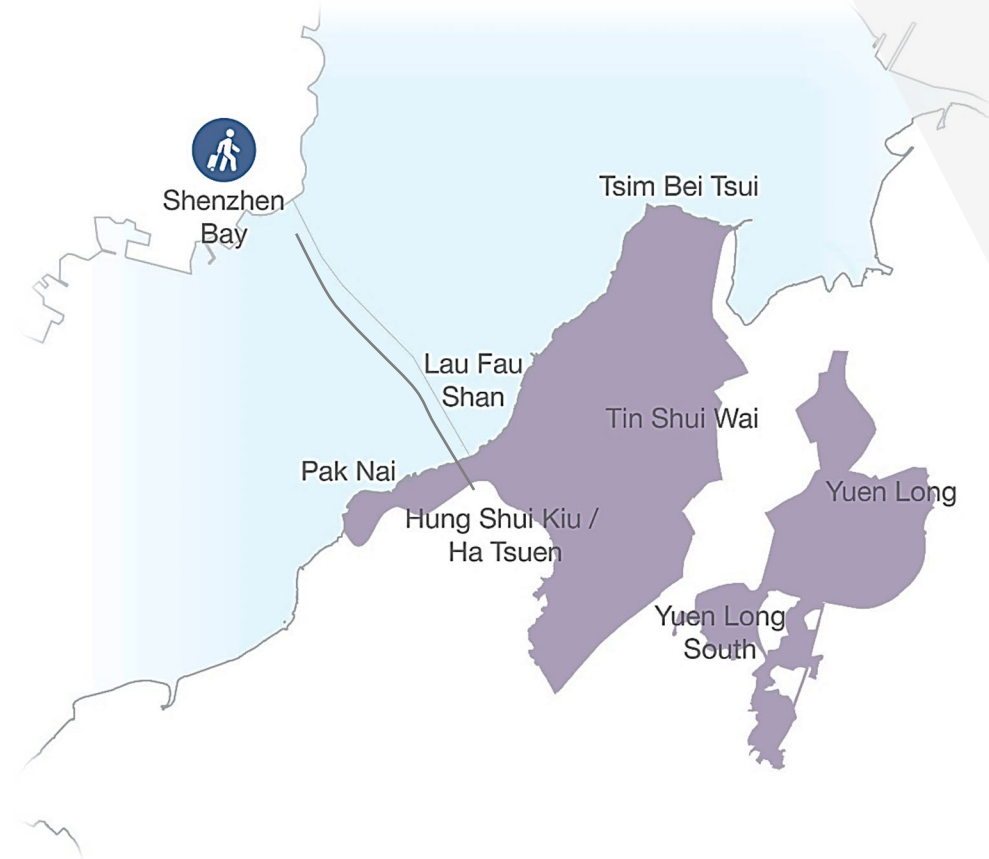
Establishing presence of government departments to drive development

# Four Major Zones



# High-end Professional Services and Logistics Hub

- Close to Shenzhen Bay Port as well as **Qianhai Cooperation Zone** and **Nanshan District**
- To be connected by **Hong Kong-Shenzhen Western Rail Link** and **Hong Kong Island West-Hung Shui Kiu Rail Link**



# High-end Professional Services and Logistics Hub

## Development theme and industry positioning

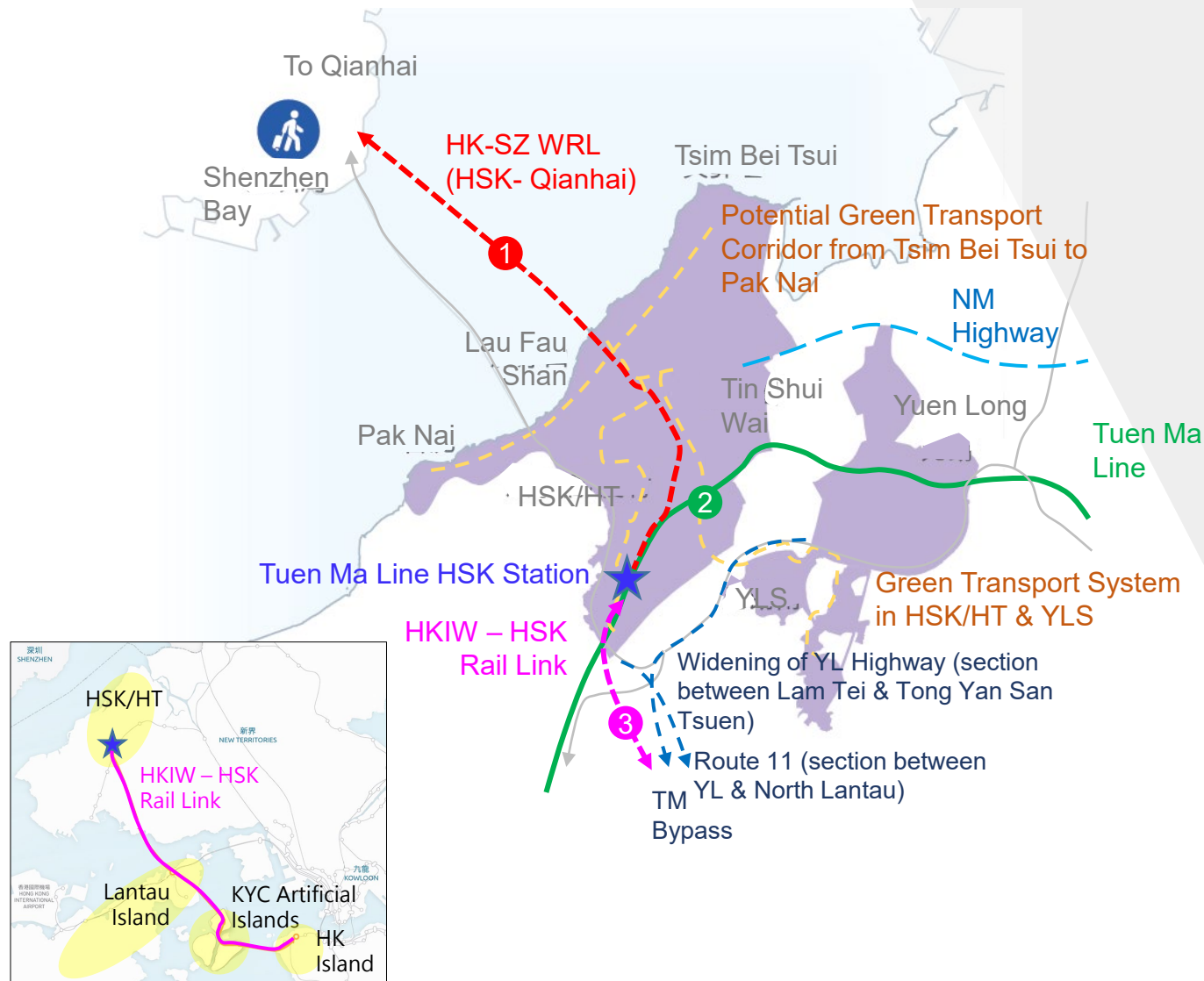
- Promote and deepen high-end economic cooperation with **Qianhai Cooperation Zone** and **Nanshan District** in areas of **finance, professional services and logistics services**, to be transformed into a modern services centre
- **High-end professional services** will be the industry positioning for Hung Shui Kiu (HSK)/ Ha Tsuen (HT), helping enterprises in the Mainland to expand their overseas markets through HK; also a **modern logistics hub**
- **A commercial district** to be developed at HSK town centre, **logistics land** reserved near Shenzhen Bay Bridge
- **Digital technology hub** will be the main industry positioning for Lau Fau Shan; also has potential for **eco-tourism**. Development proposal will be released in 2024
- Yuen Long South mainly for housing development



# High-end Professional Services and Logistics Hub

## Transport Infrastructure

- Hong Kong-Shenzhen Western Rail Link (Hung Shui Kiu-Qianhai)
- Tuen Ma Line Hung Shui Kiu Station
- Hong Kong Island West-Hung Shui Kiu Rail Link





# I&T Zone

- A hub for clustered **I&T development** to create synergy with the adjoining Shenzhen I&T Zone



# I&T Zone

## Development theme and industry positioning

- **San Tin Technopole - 300 ha of I&T land**, capable of accommodating 7 million m<sup>2</sup> of gross floor area, equivalent to 17 Science Parks; site formation of first batch of new I&T land will commence in 2024 for completion in 2026 the earliest
- First 3 buildings of **HSITP in the Loop** will be completed in phases from end 2024; HSITP and Shenzhen I&T Zone will form the **Shenzhen-Hong Kong Science and Technology Innovation Cooperation Zone**
- To reserve land for post-secondary institutions in **Ngau Tam Mei** nearby with a focus on scientific research, promoting “research, academic and industry” collaboration; development proposal will be released in 2024



# I&T Zone

## Key Transport Infrastructure

- Northern Link (NOL) Spur Line
- NOL Main Line, Central Rail Link
- Redevelopment of Huanggang Port



# Boundary Commerce and Industry Zone

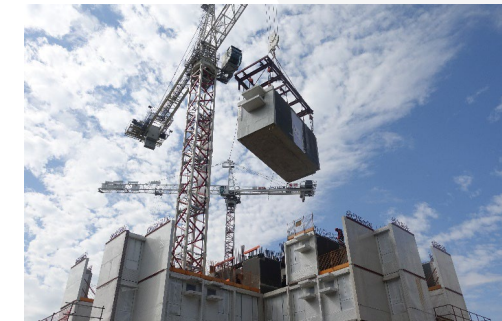
- With **3 boundary control points** (BCPs), New Territories North (NTN) New Town has potential to develop various BCP related economic uses or uses that require larger land area for operation



# Boundary Commerce and Industry Zone

## Development theme and industry positioning

- NTN New Town: suitable for developing **business services, retail financial services, healthcare services, leisure consumption, modern logistics**; may accommodate emerging industries such as **food technology, green/environmental industry** and **advanced construction industry**, etc.
- To reserve land near **Heung Yuen Wai BCP** for facilities such as boundary crossing and inspection facilities for fresh food. Man Kam To to become a passenger-only BCP
- To change 2 ha of formed site in **Sandy Ridge** to I&T and related purposes - a “spade-ready” site available for I&T use in the short-term
- Kwu Tung North (KTN)/ Fanling North primarily **as residential communities** and a place where **government offices** concentrate



# Boundary Commerce and Industry Zone

## Transport infrastructure

- Kwu Tung Station (completion in 2027)
- 2 new railway lines and 1 new road :
  1. Northern Link Eastern Extension
  2. Northeast New Territories Line
  3. NM Highway



# Blue and Green Recreation, Tourism and Conservation Circle

- Abundant natural resources as well as quite a number of traditional rural townships, potential for development of **recreation and tourism**
- **Sha Tau Kok Town** is currently the only township in HK that is located within Frontier Closed Area, with great historical significance and uniqueness



# Blue and Green Recreation, Tourism and Conservation Circle

## Development theme and industry positioning

- Second Phase **Opening of Sha Tau Kok** (except Chung Ying Street)
- Explore with Shenzhen Municipal Government the feasibility of establishing a **cultural tourism zone** in Sha Tau Kok
- Establish the **Robin's Nest Country Park**, work with Shenzhen to build an ecological corridor connecting HK and Shenzhen





# Transport Infrastructure

## High-end Professional Services and Logistics Hub

- Hong Kong-Shenzhen Western Rail Link (Hung Shui Kiu-Qianhai)
- Tuen Ma Line Hung Shui Kiu Station
- Hong Kong Island West-Hung Shui Kiu Rail Link
- Green Transit System
- Other road projects

## I&T Zone

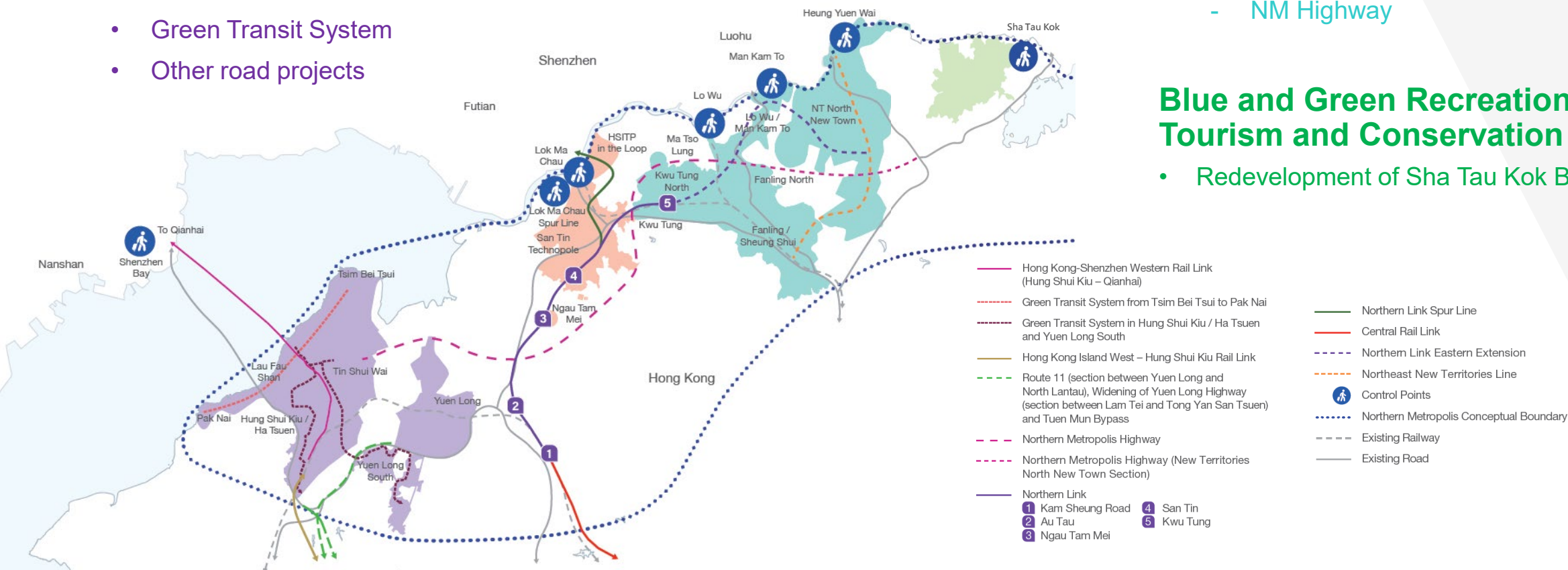
- Northern Link (NOL) Spur Line
- NOL Main Line, Central Rail Link and NM Highway
- Redevelopment of Huanggang Port

## Boundary Commerce and Industry Zone

- Kwu Tung Station (completion in 2027)
- Two new railway lines and one new road :
  - Northern Link Eastern Extension
  - Northeast New Territories Line
  - NM Highway

## Blue and Green Recreation, Tourism and Conservation Circle

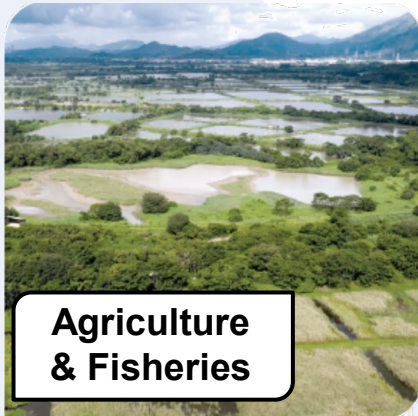
- Redevelopment of Sha Tau Kok BCP



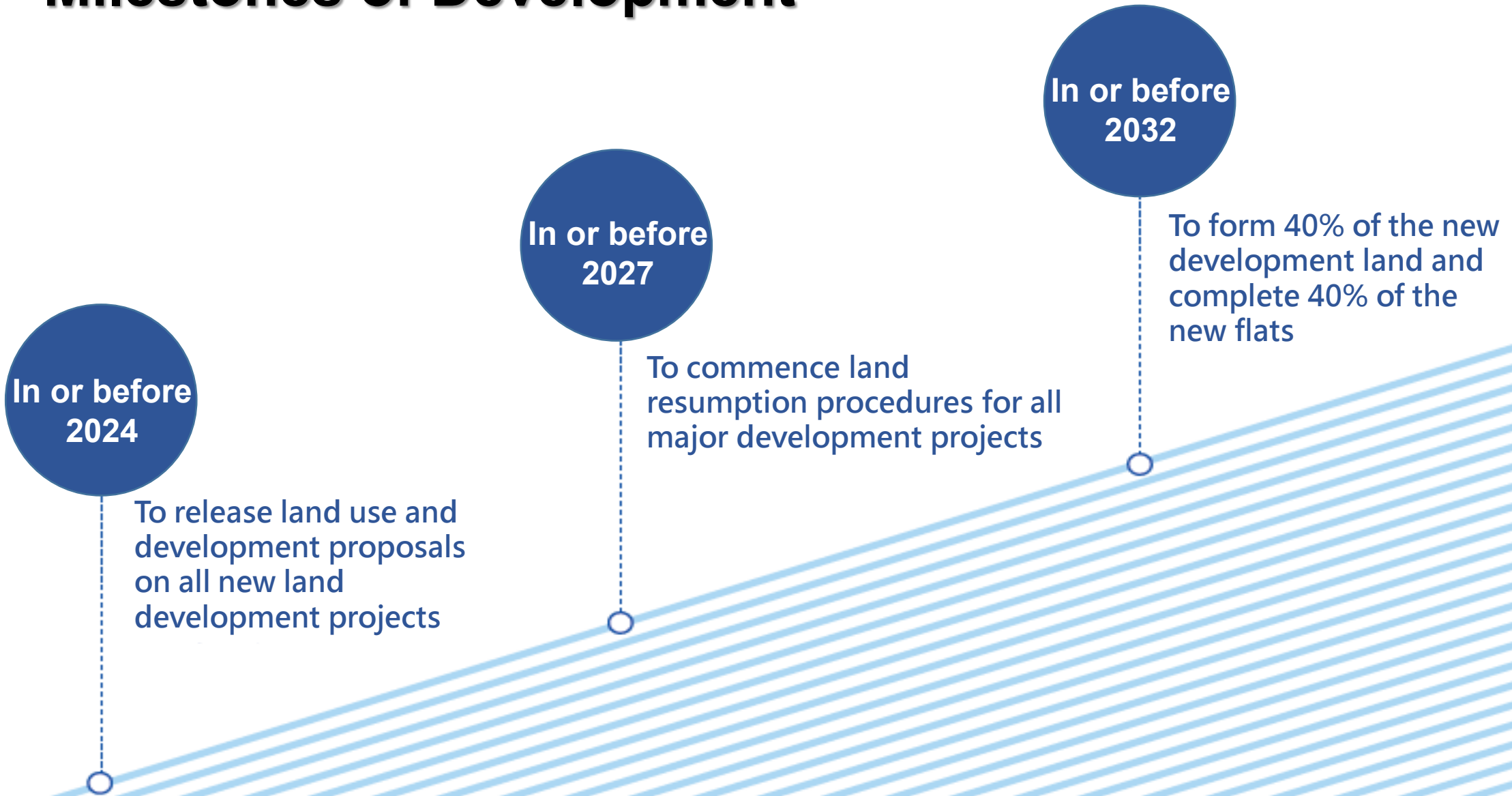
# Industry-driven Land Use Planning



Industry-driven approach and promoting economic and social development as target



# Milestones of Development



# NM Website and Social Media

Website



Facebook



Instagram



# Thank you



Northern Metropolis Co-ordination Office  
Development Bureau  
The Government of the Hong Kong Special Administrative Region  
of the People's Republic of China

# **Backup slides**

# GIC Facilities and Conservation

## High-end Professional Services and Logistics Hub

- Joint-user government complex
- Self-financing post-secondary institution
- New public hospital
- Coastal Protection Park in Lau Fau Shan

## I&T Zone

- Iconic cultural complex project
- Youth facility building
- Post-secondary institutions
- Sam Po Shue Wetland Conservation Park

## Boundary Commerce and Industry Zone

- Joint-user government office building and joint-user complex
- Post-secondary institutions
- Hong Kong Academy for Performing Arts to establish another campus
- North District Hospital expansion; reserve land in NTN New Town for public and private healthcare facilities
- Agri-park at Kwu Tung South
- Long Valley Nature Park

